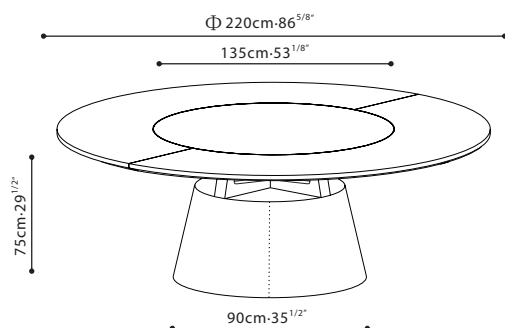


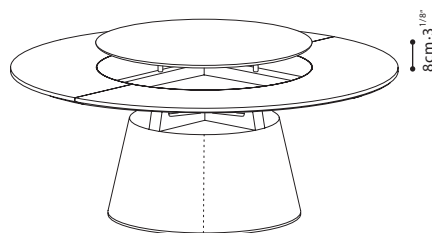
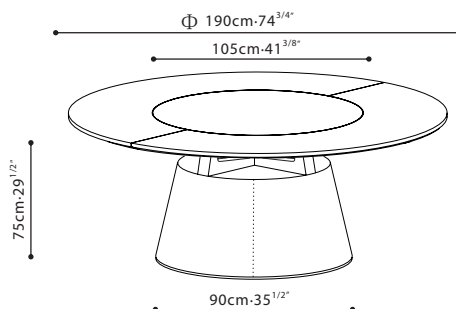


UNITY L/ TOP: Available in Graphite oak veneer and white/grey ceramic **COMBO**. **FRAME:** Support base is constructed with solid Ash Wood and finished in Grey Oak. Base is produced with MDF and plywood reinforcements, upholstered in Black Eco Leather, (FC-11). Lazy Susan on Unity Tables C05B0804 and C05B0805 come with an electric lift capability for easy cleaning purposes.

C05B0804



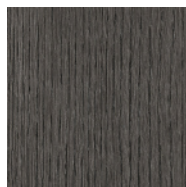
C05B0805



Lift mechanism schematic

*Unity C05B0804/05 comes with a remote-controlled lift mechanism which allows the Lazy Susan to be lifted mechanically for easy cleaning. The cord is detachable, 3 meters long. 2*AAA battery is required for the handheld remote which controls the lift mechanism. A US adaptor is required and not included. (Input voltage is 110-240V, which means a voltage converter is not required for standard US outlets)

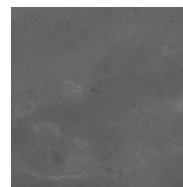
TOP:



Graphite Oak

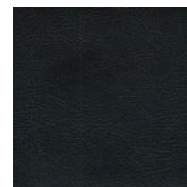


White Ceramic



Grey Ceramic

BASE:

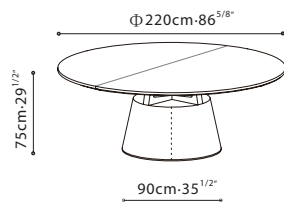


FC-11



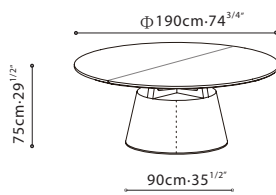
UNITY L SIMPLE/ **TOP:** Available in Grey Oak or Black Walnut veneer. **FRAME:** Support base is constructed with solid Ash Wood. Base is produced with MDF and plywood reinforcements, upholstered in Black Eco Leather, (FC-11).

CF5B0804



Base in FC-11 Eco-leather

CF5B0805

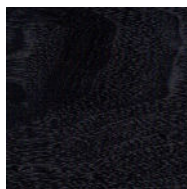


Base in FC-11 Eco-leather

TOP:



Grey Oak



Black Walnut

BASE:

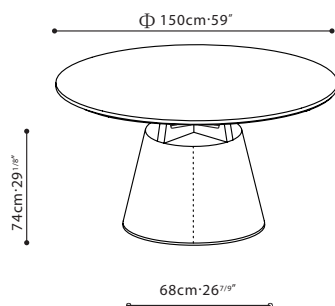


FC-11

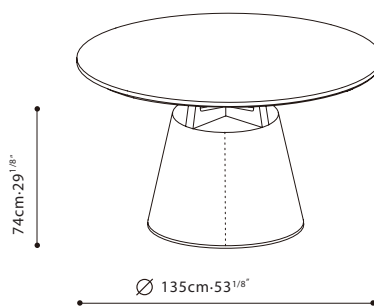


UNITY S/ TOP: Available in Grey Oak, Carrara Marble or Galaxy Grey Marble. **FRAME:** Support base is constructed with solid Ash Wood and finished in Grey Oak. Base is produced with MDF and plywood reinforcements, upholstered in Eco Leather, (FC-11 or FC-08). **LAZY SUSAN:** Optional Lazy Susan, B50B0807, is finished in Grey Oak, and is available for Unity Table C05B0803 and C05B0806.

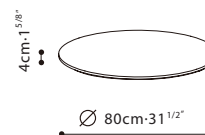
C05B0803



C05B0806

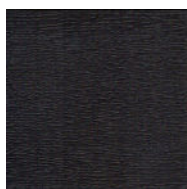


B50B0807



*Suitable for C05B0803 Only

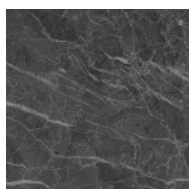
TOP:



Grey Oak

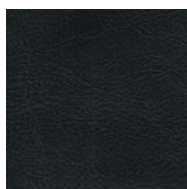


Carrara Marble

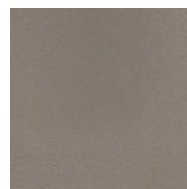


Galaxy Grey Marble

BASE:



FC-11



FC-08

*Natural marble pattern may vary.