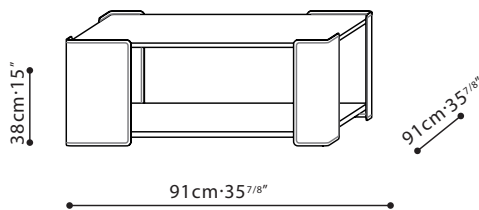


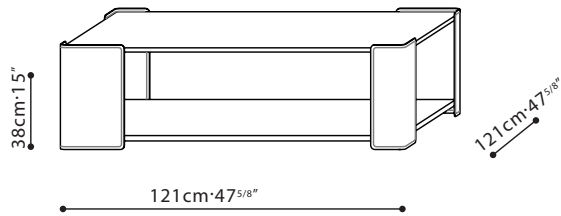


RUBIX / TOP: For both Rubix Tables C06C0701/02, table top is available Black Walnut veneer, Brown Walnut veneer, and Carrara Marble. Mystique Brown Marble is available only on the C06C0701. **FRAME/SIDES:** Metal frame is upholstered in FU Grade Eco Leather. Available color options are as follows: FU-02 Black and FU-03 Taupe. **SHELF:** Where top is Carrara Marble or Black Walnut, bottom shelf is finished in Black Walnut veneer. Where top is Mystique Brown Marble or Brown Walnut, bottom shelf is finished in Brown Walnut veneer. **LEGS:** Base is comprised of black plastic inset ABS legs.

C06C0701



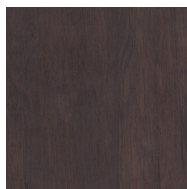
C06C0702



TOP & BASE:

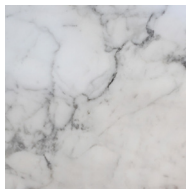


Black Walnut

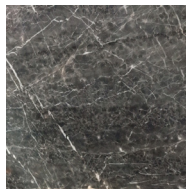


Brown Walnut

TOP:



Carrara Marble



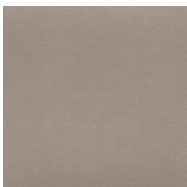
Mystique Brown Marble

*Natural marble pattern may vary.

FRAME:



FU-02 Black



FU-03 Taupe