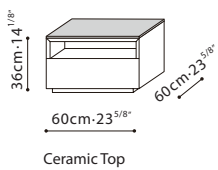


SPECS

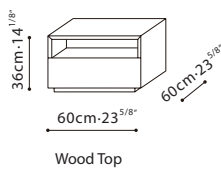


BLEND / FRAME: The frame is constructed with Grey Oak veneer. **TOP:** For models C06G0401, C06G0406, and C06G0407, the table top is made of Ceramic and available in three colors: White, Black, and Grey. Models C06C0402, C06C0404, and C06C0405 are constructed with all wood and finished in Grey Oak stain. **DRAWER:** Built-in drawer structure is made of Grey Oak melamine and comes with full extension invisible drawer runners with dampers.

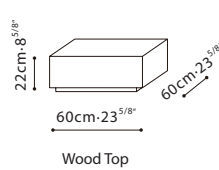
C06G0401



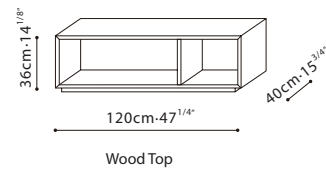
C06G0402



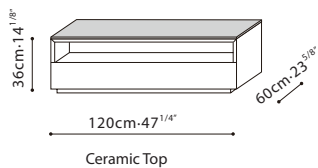
C06G0404



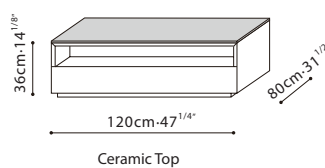
C06G0405



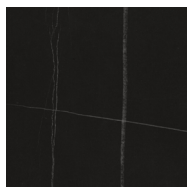
C06G0406



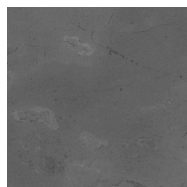
C06G0407



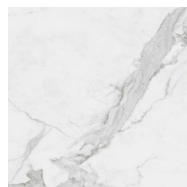
Grey Oak



Black Ceramic



Grey Ceramic

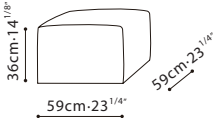


White Ceramic



BLEND OTTOMAN/ FRAME: Constructed with a solid Birch wood frame, reinforced with plywood, covered in polyurethane foam and fabric lining. **BASE:** Comes equipped with four castors affixed at the bottom. **UPHOLSTERY:** Available in Fabric (removable via Velcro) or Leather (non-removable).

C01G0403



Available in Fabric/Leather

